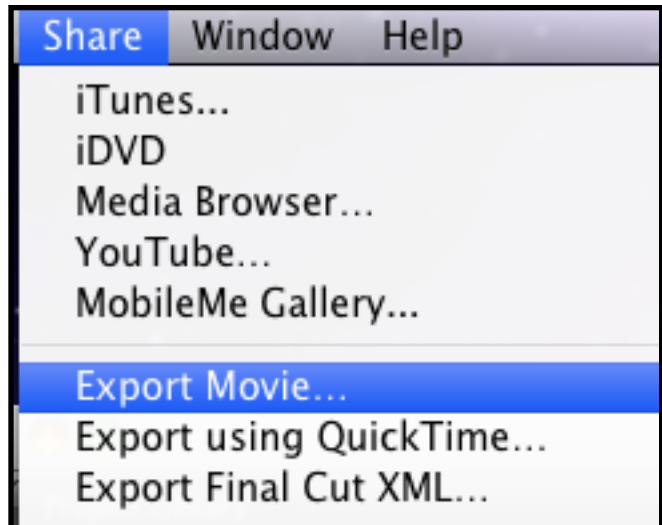


Turning in your Movie

1. Click on **Share**



2. Click on **Export Movie**

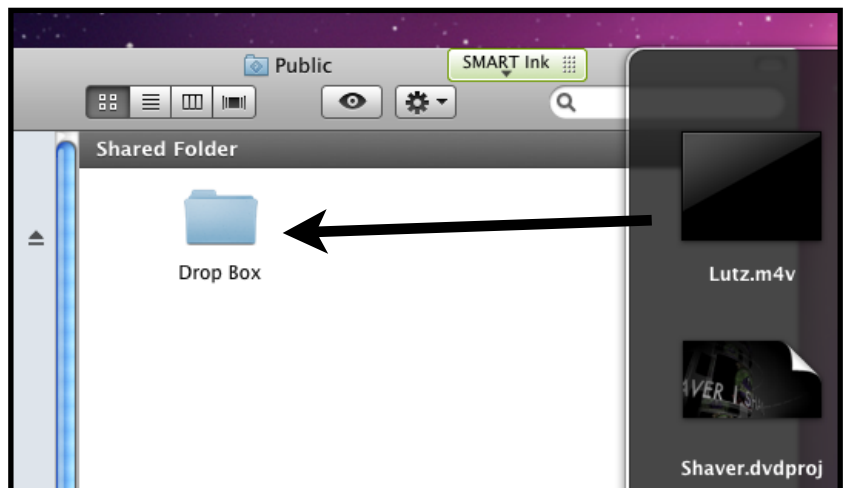
3. Title as *trailer last name first name*

Export As: Lutz

4. Make sure it is being sent to your documents

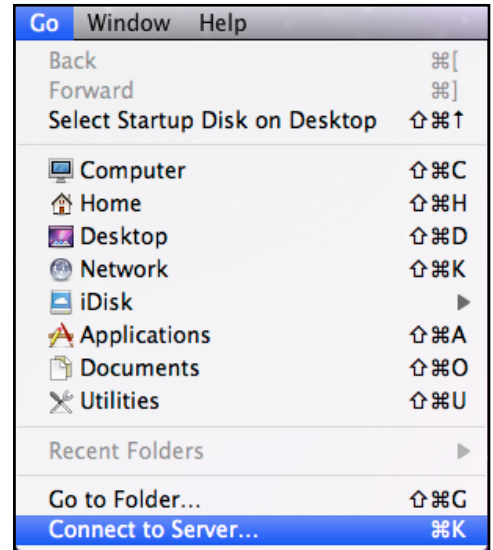
Where: Documents

5. Once 1-4 are completed go through your normal steps to turn assignments in

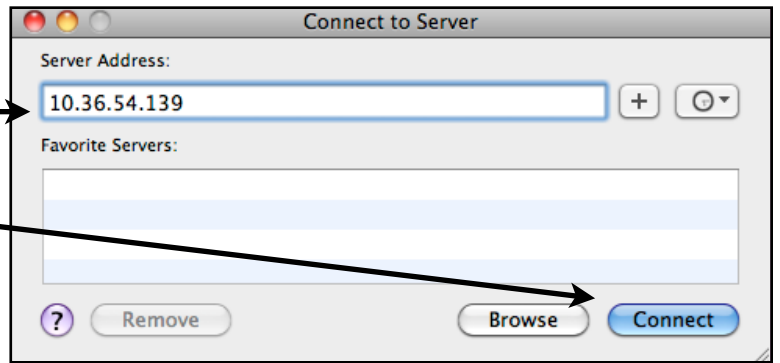


Turning Assignments In

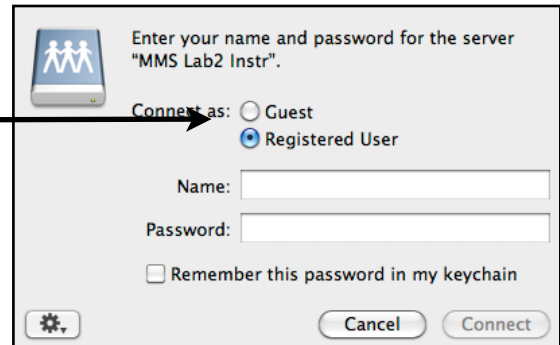
1. Click on the background of your computer.
2. Click on **Go** at the top of the screen.
3. Click on **Connect to Server...**



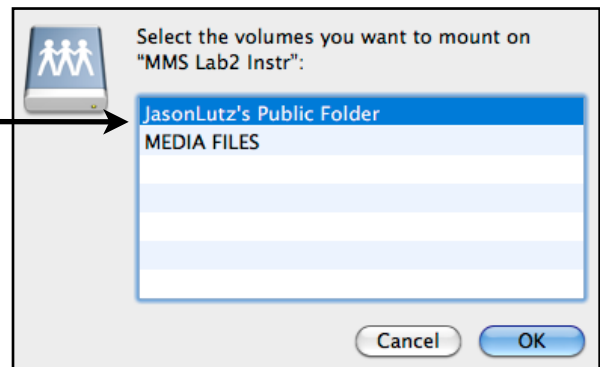
4. Type in the Server Address as:
10.36.54.139
5. Click **Connect**



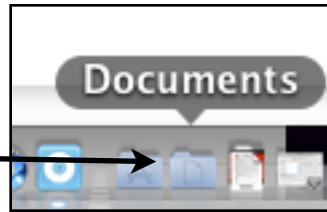
6. Click on **Guest**



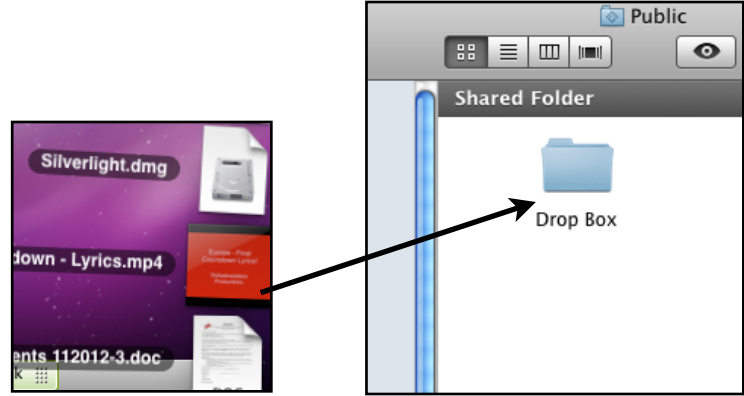
7. Click on **Jason Lutz's Public Folder**



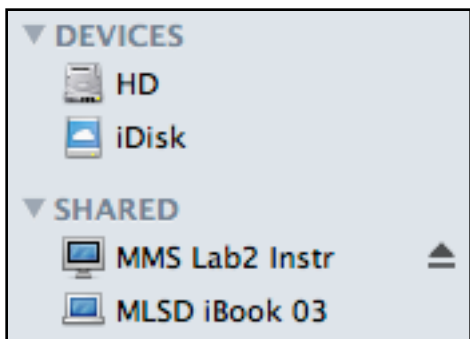
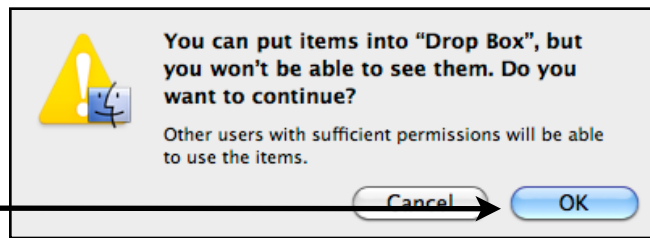
8. Next click on your **Documents** folder in your dock.



10. Last drag your assignment from your documents to the **Drop Box**



11. Once you drop your assignment this window will pop up simply click **OK**



12. Last click on the **Eject** button in your finder window